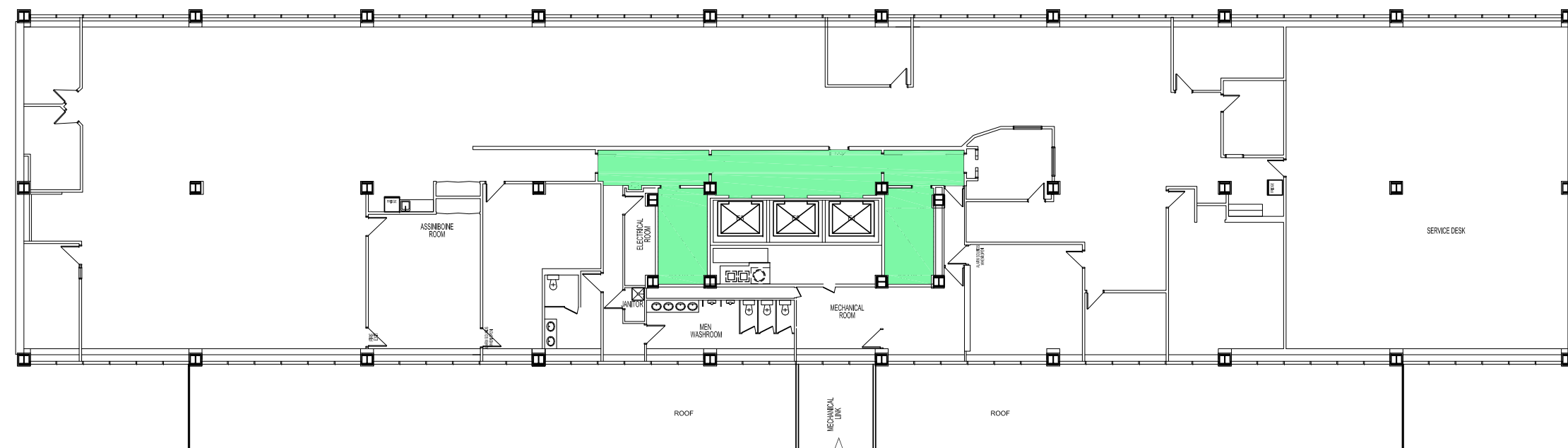


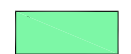
NOTES:



TENTH FLOOR PLAN
SCALE: 3/32"=1'-0"

ATTACHED 245 SMITH STREET BUILDING

266 Graham Ave.
Tenth Floor Office Tower
Areas to Clean = 657 s.f.



No.	REVISION/DESCRIPTION	BY	DATE
SEAL			

DRAWN	CHECKED	DESIGNED	APPROVED
KROTATC/SFC	USER		
DATE: 2019.08.21	APPROVAL		

THE CITY OF WINNIPEG
PLANNING, PROPERTY AND DEVELOPMENT DEPARTMENT
MUNICIPAL ACCOMMODATIONS DIVISION
3-85 GARRY STREET, R3C 4K4

PROJECT
TOWER

266 GRAHAM AVENUE

SHEET TITLE
PARTIAL TENTH FLOOR PLAN
AREAS TO CLEAN
ITEM No.2K
RFP # 491-2023

SCALE	PROJECT No:	SHEET No:
AS SHOWN		A11